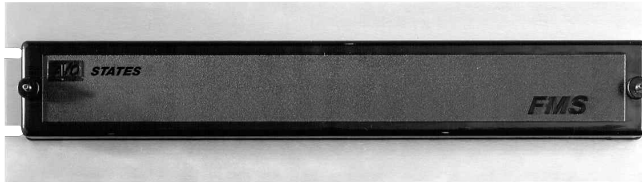


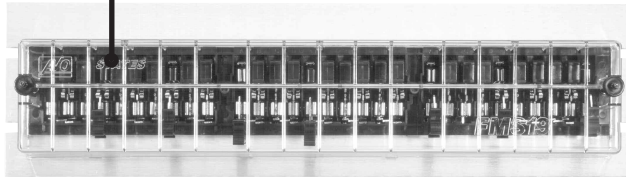
# STATES

## Type FMS 19 Inch Rack Mounting System



- Safe, durable, rugged and reliable
- Compact and versatile
- Constructed of 1/8 inch thick brushed aluminum

See at a glance if a switch blade is open or closed

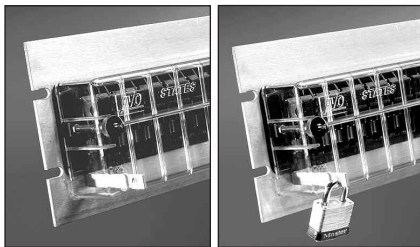
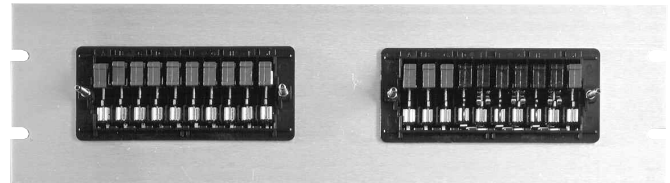


### FEATURES AND BENEFITS

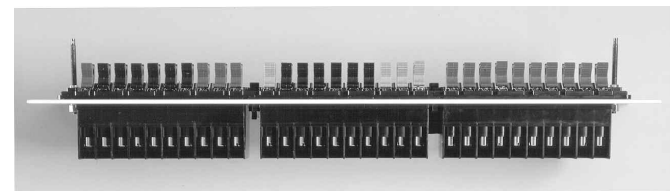
- No downtime
- Easy access
- Secure
- Use standard plugs
- Safe to use
- Choice of operation
- Cost-saving advantage

### COVERS

Both the double and triple rack units come standard with black covers. Optional clear covers, both deeper, wider and narrow, are available. Both cover types completely seal the test switches and are provided with captive nuts and provisions for lock out tags. Clear cover retro-fit kits are also available to replace existing black covers.



STATES clear cover shown above with lock-out option.



# STATES

## FRONT VIEW 2R-3 (19 x 3.5)

Cat. No.	Pos A	Pos B	Pos C
192R-310Z	FMS- BLANK	FMS- 10E	FMS- BLANK
192R-314CC	FMS- 04AG	FMS- 10NU	FMS- BLANK
192R-320AB	FMS- 10E	FMS- BLANK	FMS- 10E
192R-320AC	FMS- 10A	FMS- BLANK	FMS- 10A
192R-320AK	FMS- 10JS	FMS- 10JS	FMS- BLANK
192R-320BA	FMS- 10F	FMS- BLANK	FMS- 10A
192R-320CE	FMS- 10HE	FMS- 10HE	FMS- BLANK
192R-324BZ	FMS- 08G	FMS- 08G	FMS- 08G
192R-324S	FMS- 08F	FMS- 06F	FMS- 10A
192R-330A	FMS- 10V	FMS- 10A	FMS- 10FC
192R-330AD	FMS- 10JV	FMS- 10JV	FMS- 10A1
192R-330AE	FMS- 10A1	FMS- 10A1	FMS- 10A1
192R-330AF	FMS- 10JH	FMS- 10E	FMS- 10GT
192R-330AG	FMS- 10JX	FMS- 10E	FMS- 10GT
192R-330AH	FMS- 10JH	FMS- 10AH	FMS- 10GT
192R-330AI	FMS- 10GK	FMS- 10JY	FMS- 10A1
192R-330AJ	FMS- 10JZ	FMS- 10E	FMS- 10GT
192R-330AL	FMS- 10JV	FMS- 10JV	FMS- 10JV
192R-330AM	FMS- 10B	FMS- 10B	FMS- 10B
192R-330AN	FMS- 10PG	FMS- 10PG	FMS- 10A1
192R-330AP	FMS- 10PG	FMS- 10PG	FMS- 10PG
192R-330AQ	FMS- 10PG	FMS- 10AH	FMS- 10AH
192R-330AR	FMS- 10KY	FMS- 10E	FMS- 10GT
192R-330AS	FMS- 10KZ	FMS- 10E	FMS- 10GT
192R-330AT	FMS- 10KY	FMS- 10AH	FMS- 10GT
192R-330AV	FMS- 10A	FMS- 10A	FMS- 10A
192R-330AW	FMS- 10LD	FMS- 10F	FMS- 10F
192R-330AY	FMS- 10GK	FMS- 10LG	FMS- 10A1
192R-330AZ	FMS- 10A1	FMS- 10AH	FMS- 10AH
192R-330B	FMS- 10V	FMS- 10A	FMS- 10A1
192R-330BF	FMS- 10E	FMS- 10A	FMS- 10A
192R-330BG	FMS- 10F	FMS- 10F	FMS- 10AG
192R-330BH	FMS- 10FF	FMS- 10B	FMS- 10A1
192R-330BI	FMS- 10E	FMS- 10E	FMS- 10E
192R-330BJ	FMS- 10E	FMS- 10PV	FMS- 10A
192R-330BM	FMS- 10D	FMS- 10F	FMS- 10A
192R-330BQ	FMS- 10MQ	FMS- 10MQ	FMS- 10MS
192R-330BR	FMS- 10F	FMS- 10MT	FMS- 10MU
192R-330BS	FMS- 10V	FMS- 10A	FMS- 10MY
192R-330BT	FMS- 10B	FMS- 10NE	FMS- 10F
192R-330BU	FMS- 10E	FMS- 10GT	FMS- 10E
192R-330BV	FMS- 10E	FMS- 10HE	FMS- 10E
192R-330BW	FMS- 10HE	FMS- 10HE	FMS- 10HE
192R-330BX	FMS- 10E	FMS- 10GT	FMS- 10HE
192R-330C	FMS- 10E	FMS- 10GA	FMS- 10E
192R-330CA	FMS- 10GK	FMS- 10A1	FMS- 10JU
192R-330CB	FMS- 10AB	FMS- 10AB	FMS- 10AB
192R-330CD	FMS- 10FP	FMS- 10X	FMS- 10FP
192R-330CF	FMS- 10FI	FMS- 10A1	FMS- 10A1
192R-330CI	FMS- 10NV	FMS- 10NV	FMS- 10NV
192R-330D	FMS- 10GP	FMS- 06Q	FMS- 10GA
192R-330E	FMS- 10GA	FMS- 10A	FMS- 10A
192R-330F	FMS- 10GA	FMS- 10A1	FMS- 10A1
192R-330G	FMS- 10E	FMS- 10A	FMS- 10E
192R-330H	FMS- 10C	FMS- 10B	FMS- 10B
192R-330I	FMS- 10PD	FMS- 10AH	FMS- 10AH
192R-330J	FMS- 10PG	FMS- 10A1	FMS- 10AH
192R-330K	FMS- 10AH	FMS- 10AH	FMS- 10AH
192R-330L	FMS- 10PH	FMS- 10AH	FMS- 10AH
192R-330M	FMS- 10G	FMS- 10A1	FMS- 10A
192R-330N	FMS- 10FF	FMS- 10A1	FMS- 10A
192R-330P	FMS- 08AF	FMS- 10E	FMS- 08AG
192R-330Q	FMS- 10V	FMS- 10A	FMS- 10A
192R-330R	FMS- 10F	FMS- 10F	FMS- 10A

# STATES

## FRONT VIEW 2R-3 (19 x 3.5) Cont. Cat. No.

Cat. No.	Pos A	Pos B	Pos C
192R-330T	FMS- 10E	FMS- 10E	FMS- 10A
192R-330U	FMS- 10GH	FMS- 10E	FMS- 10GT
192R-330W	FMS- 10JQ	FMS- 10E	FMS- 10JR
192R-330X	FMS- 10JS	FMS- 10JS	FMS- 10JS
192R-330Y	FMS- 10JS	FMS- 10JS	FMS- 10JT

## 3R-3 (19 x 5.25) Cat. No.

Cat. No.	Pos A	Pos B	Pos C
193R-300-XX	FMS- BLANK	FMS- BLANK	FMS- BLANK
193R-309HZ	FMS- 09S	FMS- BLANK	FMS- BLANK
193R-310BG	FMS- 10F	FMS- BLANK	FMS- BLANK
193R-310CC	FMS- 10FK	FMS- BLANK	FMS- BLANK
193R-310CD	FMS- 10A1	FMS- BLANK	FMS- BLANK
193R-310GS	FMS- BLANK	FMS- BLANK	FMS- 10ML
193R-310DK	FMS- BLANK	FMS- 10A1	FMS- BLANK
193R-310IA	FMS- BLANK	FMS- BLANK	FMS- 10NT
193R-310KP	FMS- 10QK	FMS- BLANK	FMS- BLANK
193R-310ZP	FMS- BLANK	FMS- BLANK	FMS- 10A1
193R-314CC	FMS- 04AG	FMS- 10NU	FMS- BLANK
193R-316EB	FMS- 06F	FMS- 10D	FMS- BLANK
193R-318DP	FMS- 08G	FMS- BLANK	FMS- 10A1
193R-318GI	FMS- 06V	FMS- 06V	FMS- 06V
193R-318GL	FMS- 06F	FMS- 06F	FMS- 06F
193R-320BK	FMS- 10E1	FMS- BLANK	FMS- 10A1
193R-320BL	FMS- 10E1	FMS- BLANK	FMS- 10E1
193R-320BP	FMS- 10E2	FMS- BLANK	FMS- 10A1
193R-320BR	FMS- 10A	FMS- 10A	FMS- BLANK
193R-320BW	FMS- 10A1	FMS- BLANK	FMS- 10A1
193R-320BY	FMS- 10A1	FMS- BLANK	FMS- 10E4
193R-320BZ	FMS- 10JP	FMS- BLANK	FMS- 10JP
193R-320CB	FMS- 10FK	FMS- 10FK	FMS- BLANK
193R-320CE	FMS- 10FK	FMS- 10A1	FMS- BLANK
193R-320CL	FMS- 10E3	FMS- 10A	FMS- BLANK
193R-320CM	FMS- 10E2	FMS- 10A	FMS- BLANK
193R-320CQ	FMS- 10G	FMS- 10A1	FMS- BLANK
193R-320CV	FMS- 10AD	FMS- BLANK	FMS- 10AD
193R-320DJ	FMS- BLANK	FMS- 10FK	FMS- 10A1
193R-320EZ	FMS- 10E1	FMS- 10A1	FMS- BLANK
193R-320FI	FMS- 10E1	FMS- BLANK	FMS- 10LP
193R-320FL	FMS- BLANK	FMS- 10F	FMS- 10F
193R-320FM	FMS- BLANK	FMS- 10A1	FMS- 10A1
193R-320FZ	FMS- 10A	FMS- BLANK	FMS- 10A
193R-320GA	FMS- 10E	FMS- BLANK	FMS- 10KB
193R-320GB	FMS- 10E	FMS- 10A	FMS- BLANK
193R-320GD	FMS- 10E	FMS- 10KB	FMS- BLANK
193R-320GU	FMS- 10MM	FMS- 10FA	FMS- BLANK
193R-320IR	FMS- BLANK	FMS- 10NW	FMS- 10NW
193R-320JK	FMS- 10E1	FMS- 10LP	FMS- BLANK
193R-320XP	FMS- 10A	FMS- BLANK	FMS- 10A1
193R-322FG	FMS- 06V	FMS- 06V	FMS- 10F
193R-322HS	FMS- 06AK	FMS- 06AK	FMS- 10F
193R-324AP	FMS- 10E2	FMS- 04V	FMS- 10A1
193R-324V	FMS- 08G	FMS- 08G	FMS- 08G
193R-324W	FMS- 08G	FMS- 08AC	FMS- 08G
193R-324DY	FMS- 08AJ	FMS- 08AJ	FMS- 08AJ
193R-324HE	FMS- 08AQ	FMS- 06AK	FMS- 10F
193R-326CP	FMS- 08G	FMS- 08G	FMS- 10A1
193R-326DE	FMS- 10E	FMS- 10E	FMS- 06F
193R-327IC	FMS- 09S	FMS- 09S	FMS- 09S
193R-328EE	FMS- 08G	FMS- 10A	FMS- 10A
193R-328GP	FMS- 08AQ	FMS- 10F	FMS- 10F
193R-328HR	FMS- 08G	FMS- 10A1	FMS- 10ND

# STATES

## FRONT VIEW

### 3R-3 (19 x 5.25) Cont.

Cat. No.	Pos A	Pos B	Pos C
193R-329GW	FMS- 10F	FMS- 09R	FMS- 10A
193R-330A	FMS- 10A1	FMS- 10B	FMS- 10E1
193R-330B	FMS- 10A1	FMS- 08G	FMS- 08G
193R-330BA	FMS- 10E1	FMS- 10A1	FMS- 10A1
193R-330BB	FMS- 10HR	FMS- 10HR	FMS- 10HR
193R-330BC	FMS- 10A1	FMS- 10A1	FMS- 10E1
193R-330BD	FMS- 10A1	FMS- 10FJ	FMS- 10E1
193R-330BE	FMS- 10FK	FMS- 10FK	FMS- 10E
193R-330BF	FMS- 10D	FMS- 10D	FMS- 10D
193R-330BI	FMS- 10FN	FMS- 10FN	FMS- 10FN
193R-330BN	FMS- 10GK	FMS- 10A	FMS- 10A
193R-330BP	FMS- 10GK	FMS- 10Z	FMS- 10A
193R-330BT	FMS- 10GS	FMS- 10A	FMS- 10JJ
193R-330BU	FMS- 10HR	FMS- 10HR	FMS- 10GS
193R-330BX	FMS- 10A1	FMS- 10A1	FMS- 10GK
193R-330C	FMS- 10V	FMS- 10A	FMS- 10A1
193R-330CA	FMS- 10V	FMS- 10A	FMS- 10A
193R-330CB	FMS- 10GA	FMS- 10A	FMS- 10A
193R-330CC	FMS- 10GA	FMS- 10A1	FMS- 10A1
193R-330CD	FMS- 10E4	FMS- 10E4	FMS- 10A1
193R-330CE	FMS- 10E2	FMS- 10A1	FMS- 10E2
193R-330CF	FMS- 10F	FMS- 10A	FMS- 10A
193R-330CG	FMS- 10E3	FMS- 10E2	FMS- 10E2
193R-330CH	FMS- 10E4	FMS- 10A1	FMS- 10A1
193R-330CI	FMS- 10E	FMS- 10A	FMS- 10E
193R-330CJ	FMS- 10E4	FMS- 10E4	FMS- 10E4
193R-330CK	FMS- 10E2	FMS- 10A	FMS- 10A
193R-330CN	FMS- 10FF	FMS- 10A1	FMS- 10A1
193R-330CP	FMS- 10G	FMS- 10FF	FMS- 10FF
193R-330CR	FMS- 10G	FMS- 10FF	FMS- 10G
193R-330CS	FMS- 10G	FMS- 10A1	FMS- 10A1
193R-330CT	FMS- 10C	FMS- 10B	FMS- 10B
193R-330CU	FMS- 10AD	FMS- 10AD	FMS- 10E3
193R-330CW	FMS- 10FK	FMS- 10FK	FMS- 10FP
193R-330CX	FMS- 10FK	FMS- 10FK	FMS- 10FK
193R-330CY	FMS- 10FK	FMS- 10FK	FMS- 10E3
193R-330CZ	FMS- 10A	FMS- 10A	FMS- 10E
193R-330D	FMS- 10V	FMS- 10A	FMS- 10FC
193R-330DA	FMS- 10JP	FMS- 10JP	FMS- 10JP
193R-330DB	FMS- 10GT	FMS- 10GT	FMS- 10GT
193R-330DC	FMS- 10E	FMS- 10E	FMS- 10E
193R-330DI	FMS- 10F	FMS- 10F	FMS- 10A1
193R-330DL	FMS- 10G	FMS- 10A1	FMS- 10A
193R-330DM	FMS- 10FF	FMS- 10FF	FMS- 10FF
193R-330DN	FMS- 10FF	FMS- 10A	FMS- 10A1
193R-330DP	FMS- 10GK	FMS- 10Z	FMS- 10A3
193R-330DR	FMS- 10A	FMS- 10F	FMS- 10F
193R-330DS	FMS- 10E1	FMS- 10E1	FMS- 10E
193R-330DT	FMS- 10GK	FMS- 10E2	FMS- 10E2
193R-330DU	FMS- 10F	FMS- 10F	FMS- 10FK
193R-330DV	FMS- 10E4	FMS- 10E4	FMS- 10GZ
193R-330DX	FMS- 10E4	FMS- 10A	FMS- 10E4
193R-330DZ	FMS- 10E1	FMS- 10JK	FMS- 10A1
193R-330E	FMS- 10V	FMS- 10A	FMS- 10GB
193R-330ED	FMS- 10G	FMS- 10G	FMS- 10G
193R-330EF	FMS- 10E1	FMS- 10E1	FMS- 10FK
193R-330EG	FMS- 10E1	FMS- 10A	FMS- 10A
193R-330EH	FMS- 10E	FMS- 10A	FMS- 10A
193R-330EI	FMS- 10A1	FMS- 10E4	FMS- 10E4
193R-330EJ	FMS- 10G	FMS- 10G	FMS- 10A1
193R-330EK	FMS- 10A	FMS- 10E4	FMS- 10A
193R-330EL	FMS- 10A1	FMS- 10A1	FMS- 10FK

# STATES

## FRONT VIEW 3R-3 (19 x 5.25) Cont.

Cat. No.	Pos A	Pos B	Pos C
193R-330EP	FMS- 10A	FMS- 10E	FMS- 10E
193R-330EQ	FMS- 10A1	FMS- 10E1	FMS- 10E1
193R-330ER	FMS- 10AB	FMS- 10AB	FMS- 10AB
193R-330EY	FMS- 10A	FMS- 10B	FMS- 10D
193R-330E1	FMS- 10E1	FMS- 10E1	FMS- 10E1
193R-330F	FMS- 10E	FMS- 10GA	FMS- 10E
193R-330FA	FMS- 10B	FMS- 10PK	FMS- 10PL
193R-330FB	FMS- 10FF	FMS- 10A1	FMS- 10FF
193R-330FC	FMS- 10FF	FMS- 10JK	FMS- 10A1
193R-330FD	FMS- 10FX	FMS- 10PQ	FMS- 10Y
193R-330FE	FMS- 10AB	FMS- 10A	FMS- 10A
193R-330FP	FMS- 10E	FMS- 10E	FMS- 10A
193R-330FU	FMS- 10E	FMS- 10E	FMS- 10AF
193R-330FW	FMS- 10FG	FMS- 10E	FMS- 10E
193R-330FY	FMS- 10GN	FMS- 10A	FMS- 10A
193R-330G	FMS- 10G	FMS- 10A1	FMS- 10GM
193R-330GC	FMS- 10E	FMS- 10A	FMS- 10KB
193R-330GE	FMS- 10F	FMS- 10F	FMS- 10HI
193R-330GJ	FMS- 10MA	FMS- 10MB	FMS- 10GT
193R-330GK	FMS- 10A1	FMS- 10A	FMS- 10A
193R-330GM	FMS- 10D	FMS- 10A	FMS- 10D
193R-330GN	FMS- 10AB	FMS- 10A	FMS- 10AB
193R-330GV	FMS- 10C	FMS- 10C	FMS- 10C
193R-330GX	FMS- 10G	FMS- 10A1	FMS- 10GA
193R-330GY	FMS- 10G	FMS- 10A1	FMS- 10MW
193R-330H	FMS- 10F	FMS- 10A1	FMS- 10GM
193R-330HC	FMS- 10D	FMS- 10F	FMS- 10F
193R-330HD	FMS- 10MZ	FMS- 10GK	FMS- 10NC
193R-330HG	FMS- 10JJ	FMS- 10A1	FMS- 10HD
193R-330HJ	FMS- 10F	FMS- 10F	FMS- 10A
193R-330HK	FMS- 10GA	FMS- 10A1	FMS- 10HD
193R-330HL	FMS- 10E	FMS- 10JG	FMS- 10E3
193R-330HM	FMS- 10E	FMS- 10E	FMS- 10E3
193R-330HN	FMS- 10E1	FMS- 10E1	FMS- 10A1
193R-330HP	FMS- 10E1	FMS- 10E4	FMS- 10A1
193R-330HX	FMS- 10G	FMS- 10GL	FMS- 10FB
193R-330HY	FMS- 10D	FMS- 10NS	FMS- 10NT
193R-330I	FMS- 10E	FMS- 10A1	FMS- 10A1
193R-330IB	FMS- 10NV	FMS- 10NV	FMS- 10NV
193R-330ID	FMS- 10A1	FMS- 10A1	FMS- 10G
193R-330IF	FMS- 10C	FMS- 10C	FMS- 10F
193R-330IH	FMS- 10FI	FMS- 10E	FMS- 10E
193R-330IJ	FMS- 10A	FMS- 10HD	FMS- 10F
193R-330IK	FMS- 10A1	FMS- 10G	FMS- 10G
193R-330IL	FMS- 10GM	FMS- 10A1	FMS- 10HD
193R-330IM	FMS- 10GM	FMS- 10A1	FMS- 10NW
193R-330IN	FMS- 10GM	FMS- 10HD	FMS- 10HD
193R-330IP	FMS- 10HD	FMS- 10HD	FMS- 10HD
193R-330IQ	FMS- 10GM	FMS- 10GK	FMS- 10NC
193R-330IS	FMS- 10FA	FMS- 10FA	FMS- 10FI
193R-330IT	FMS- 10AB	FMS- 10AB	FMS- 10A
193R-330IU	FMS- 10PG	FMS- 10A1	FMS- 10AH
193R-330IW	FMS- 10E3	FMS- 10GA	FMS- 10JG
193R-330IX	FMS- 10E2	FMS- 10E2	FMS- 10JG
193R-330IY	FMS- 10JG	FMS- 10JG	FMS- 10JG
193R-330IZ	FMS- 10LV	FMS- 10HD	FMS- 10HD
193R-330J	FMS- 10A1	FMS- 10A1	FMS- 10A1
193R-330JC	FMS- 10U	FMS- 10U	FMS- 10HE
193R-330JD	FMS- 10KW	FMS- 10HE	FMS- 10HE
193R-330JE	FMS- 10JD	FMS- 10HE	FMS- 10HE
193R-330JI	FMS- 10JV	FMS- 10JV	FMS- 10JV
193R-330JJ	FMS- 10JV	FMS- 10JW	FMS- 10A1

# STATES

## FRONT VIEW

### 3R-3 (19 x 5.25) Cont.

Cat. No.	Pos A	Pos B	Pos C
193R-330JL	FMS- 10F	FMS- 10F	FMS- 10P
193R-330JM	FMS- 10A	FMS- 10AB	FMS- 10A
193R-330JN	FMS- 10FI	FMS- 10A1	FMS- 10A1
193R-330JQ	FMS- 10MQ	FMS- 10QE	FMS- 10QC
193R-330JR	FMS- 10QF	FMS- 10QF	FMS- 10QF
193R-330JS	FMS- 10MQ	FMS- 10MQ	FMS- 10QD
193R-330JT	FMS- 10QH	FMS- 10A1	FMS- 10A
193R-330JU	FMS- 10Z	FMS- 10Z	FMS- 10Z
193R-330JV	FMS- 10QH	FMS- 10E2	FMS- 10Z
193R-330JW	FMS- 10QI	FMS- 10Z	FMS- 10Z
193R-330JX	FMS- 10E2	FMS- 10Z	FMS- 10Z
193R-330JY	FMS- 10QG	FMS- 10QG	FMS- 10QG
193R-330K	FMS- 10F	FMS- 10A1	FMS- 10A1
193R-330KI	FMS- 10GT	FMS- 10GT	FMS- 10F
193R-330KJ	FMS- 10QJ	FMS- 10QJ	FMS- 10QJ
193R-330KL	FMS- 10QJ	FMS- 10A	FMS- 10A
193R-330KM	FMS- 10A	FMS- 10FG	FMS- 10A
193R-330KN	FMS- 10E3	FMS- 10E3	FMS- 10E3
193R-330KQ	FMS- 10GK	FMS- 10GK	FMS- 10A
193R-330L	FMS- 10F	FMS- 10F	FMS- 10F
193R-330M	FMS- 10GS	FMS- 10A	FMS- 10A1
193R-330N	FMS- 10A	FMS- 10A	FMS- 10F
193R-330P	FMS- 10V	FMS- 10A	FMS- 10GN
193R-330Q	FMS- 10E2	FMS- 10A	FMS- 10E2
193R-330R	FMS- 10E2	FMS- 10E2	FMS- 10E2
193R-330S	FMS- 10A	FMS- 10A	FMS- 10A
193R-330T	FMS- 10A	FMS- 10A	FMS- 10A1
193R-330U	FMS- 10E	FMS- 10A	FMS- 10GA
193R-330V	FMS- 10GK	FMS- 10JK	FMS- 10A1

### 4R-3 (19 x 7)

Cat. No.	Pos A	Pos B	Pos C
194R-310AJ	FMS- 10JJ	FMS- BLANK	FMS- BLANK
194R-310AN	FMS- 10A1	FMS- BLANK	FMS- BLANK
194R-320AB	FMS- 10A1	FMS- BLANK	FMS- 10A1
194R-320AK	FMS- 10E1	FMS- BLANK	FMS- 10E1
194R-320AY	FMS- 10A	FMS- 10A	FMS- BLANK
194R-320BD	FMS- 10NJ	FMS- BLANK	FMS- 10A
194R-320BE	FMS- 10A	FMS- BLANK	FMS- 10A
194R-320BF	FMS- 10NK	FMS- BLANK	FMS- 10NK
194R-320W	FMS- 10E1	FMS- 10A1	FMS- BLANK
194R-320X	FMS- 10E1	FMS- 10E1	FMS- BLANK
194R-320Y	FMS- 10E4	FMS- BLANK	FMS- 10E4
194R-320Z	FMS- 10A1	FMS- 10A	FMS- BLANK
194R-326E	FMS- 08F	FMS- 08F	FMS- 10A
194R-330A	FMS- 10A1	FMS- 10A1	FMS- 10A1
194R-330AC	FMS- 10E1	FMS- 10E1	FMS- 10E4
194R-330AE	FMS- 10A1	FMS- 10E1	FMS- 10A1
194R-330AI	FMS- 10D	FMS- 10D	FMS- 10D
194R-330AM	FMS- 10E1	FMS- 10A1	FMS- 10E1
194R-330AT	FMS- 10GK	FMS- 10A1	FMS- 10A1
194R-330AX	FMS- 10E3	FMS- 10A	FMS- 10A
194R-330AZ	FMS- 10E2	FMS- 10E2	FMS- 10A
194R-330B	FMS- 10A1	FMS- 10A1	FMS- 10E1
194R-330BA	FMS- 10E1	FMS- 10E1	FMS- 10A1
194R-330BB	FMS- 10F	FMS- 10A1	FMS- 10A1
194R-330BC	FMS- 10E4	FMS- 10E4	FMS- 10E4
194R-330BG	FMS- 10A	FMS- 10E2	FMS- 10E2
194R-330BH	FMS- 10F	FMS- 10A	FMS- 10A
194R-330C	FMS- 10D	FMS- 10A	FMS- 10D
194R-330CP	FMS- 10E2	FMS- 10A1	FMS- 10A1
194R-330D	FMS- 10D	FMS- 10A	FMS- 10A

# STATES

## FRONT VIEW 4R-3 (19 x 7) Cont.

Cat. No.	Pos A	Pos B	Pos C
194R-330E	FMS- 10F	FMS- 10A1	FMS- 10F
194R-330F	FMS- 10E2	FMS- 10E3	FMS- 10E3
194R-330G	FMS- 10E1	FMS- 10A1	FMS- 10A1
194R-330H	FMS- 10A	FMS- 10A	FMS- 10A
194R-330I	FMS- 10A	FMS- 10A	FMS- 10E
194R-330J	FMS- 10A	FMS- 10E	FMS- 10E
194R-330K	FMS- 10FF	FMS- 10FF	FMS- 10FF
194R-330N	FMS- 10E1	FMS- 10A	FMS- 10E1
194R-330P	FMS- 10E1	FMS- 10E1	FMS- 10E1
194R-330Q	FMS- 10E4	FMS- 10A1	FMS- 10A1
194R-330R	FMS- 10A1	FMS- 10E1	FMS- 10E1
194R-330S	FMS- 10A1	FMS- 10E1	FMS- 10A1
194R-330V	FMS- 10E	FMS- 10A	FMS- 10A

## 2R-2 (19 x 3.5)

Cat. No.	Pos A	Pos B
192R-206N	FMS- 06Q	FMS-BLANK
192R-208AQ	FMS- BLANK	FMS-08G
192R-210A	FMS- 10A	FMS-BLANK
192R-210H	FMS- BLANK	FMS-10A
192R-210M	FMS- BLANK	FMS-10E4
192R-210P	FMS- 10V	FMS-BLANK
192R-210T	FMS- 04U	FMS-06Y
192R-210Z	FMS- BLANK	FMS-10E1
192R-210AK	FMS- BLANK	FMS-10A1
192R-210AL	FMS- BLANK	FMS-10V
192R-210AM	FMS- BLANK	FMS-10GA
192R-210AR	FMS- BLANK	FMS-10GB
192R-212BC	FMS- 06Q	FMS-06Q
192R-212U	FMS- 07W	FMS-05L
192R-216J	FMS- 10A1	FMS-06Q
192R-216L	FMS- 10V	FMS-06Q
192R-216AN	FMS- 08G	FMS-08G
192R-216AS	FMS- 08F	FMS-08F
192R-217Q	FMS- 10G	FMS-07V
192R-218K	FMS- 08G	FMS-10GA
192R-218AF	FMS- 08G	FMS-10A
192R-218AG	FMS- 08X	FMS-10A1
192R-218AP	FMS- 10A1	FMS-08G
192R-220A	FMS- 10V	FMS-10A
192R-220B	FMS- 10A1	FMS-10A1
192R-220C	FMS- 10A1	FMS-10E
192R-220D	FMS- 10E4	FMS-10E4
192R-220E	FMS- 10A1	FMS-10A
192R-220F	FMS- 10A	FMS-10A
192R-220G	FMS- 10E1	FMS-10E1
192R-220I	FMS- 10A	FMS-10GA
192R-220R	FMS- 10F	FMS-10F
192R-220S	FMS- 10HI	FMS-10A1
192R-220V	FMS- 10E3	FMS-10A
192R-220X	FMS- 10E	FMS-10E
192R-220AB	FMS- 10E	FMS-10A
192R-220AD	FMS- 10A	FMS-10F
192R-220AE	FMS- 10D	FMS-10A
192R-220AI	FMS- 10D	FMS-10D
192R-220AJ	FMS- 10A	FMS-10E
192R-220AT	FMS- 10C	FMS-10C
192R-220AU	FMS- 10AD	FMS-10GS
192R-220BB	FMS- 10M3	FMS-10MR
192R-220BD	FMS- 10NA	FMS-10FM
192R-220BI	FMS- 10NA	FMS-10FI

## 3R-2 (19 x 5.25)

Cat. No.	Pos A	Pos B
193R-206AS	FMS- 06Q	FMS-BLANK
193R-210AH	FMS- 10V	FMS-BLANK
193R-210AK	FMS- BLANK	FMS-10JJ
193R-210AY	FMS- 10A	FMS-BLANK
193R-210FV	FMS- BLANK	FMS-10GA
193R-210G	FMS- BLANK	FMS-10GN
193R-210P	FMS- BLANK	FMS-10A1
193R-210T	FMS- BLANK	FMS-10A
193R-212CW	FMS- 06Q	FMS-06Q
193R-216AF	FMS- 06Q	FMS-10V
193R-216BD	FMS- 08AB	FMS-08AB
193R-216R	FMS- 10GA	FMS-106R
193R-216Y	FMS- 06Q	FMS-10GA
193R-218AO	FMS- 08G	FMS-10A
193R-218AP	FMS- 08X	FMS-10A1
193R-219BJ	FMS- 09U	FMS-10QA
193R-220A	FMS- 10E1	FMS-10F
193R-220AB	FMS- 10FN	FMS-10FN
193R-220AC	FMS- 10GK	FMS-10GK
193R-220AE	FMS- 10V	FMS-10V
193R-220AG	FMS- 10D	FMS-10A
193R-220AI	FMS- 10E1	FMS-10E1
193R-220AJ	FMS- 10GS	FMS-10A
193R-220AL	FMS- 10E2	FMS-10E2
193R-220AM	FMS- 10E1	FMS-10JJ
193R-220AN	FMS- 10A	FMS-10GB
193R-220AT	FMS- 10A2	FMS-10A
193R-220AU	FMS- 10AB	FMS-10AB
193R-220AW	FMS- 10GA	FMS-10V
193R-220AX	FMS- 10E1	FMS-10J
193R-220AZ	FMS- 10A1	FMS-10MC
193R-220B	FMS- 10A1	FMS-08G
193R-220BA	FMS- 10A	FMS-10F
193R-220BB	FMS- 10D	FMS-10F
193R-220BC	FMS- 10B	FMS-10C
193R-220BE	FMS- 10JG	FMS-10JG
193R-220BF	FMS- 10A	FMS-10B
193R-220BG	FMS- 10B	FMS-10B
193R-220BI	FMS- 10NA	FMS-10FI
193R-220BW	FMS- 10GA	FMS-10GA
193R-220C	FMS- 10A1	FMS-10E2
193R-220D	FMS- 10V	FMS-10A
193R-220DW	FMS- 10HS	FMS-10A
193R-220E	FMS- 10A1	FMS-10A1
193R-220F	FMS- 10A1	FMS-10A

# STATES

## FRONT VIEW 3R-2 (19 x 5.25) Cont.

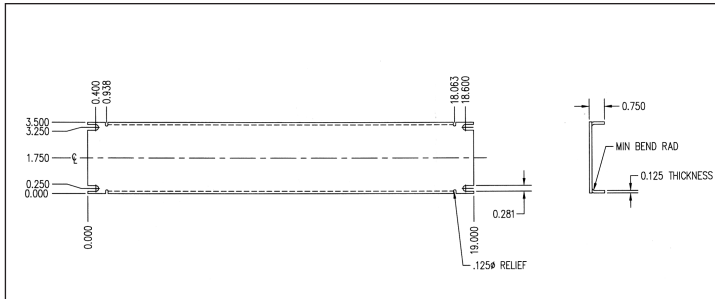
Cat. No.	Pos A	Pos B
193R-220H	FMS- 10E4	FMS-10E4
193R-220I	FMS- 10A	FMS-10GR
193R-220J	FMS- 10E	FMS-10E
193R-220K	FMS- 10A	FMS-10A1
193R-220L	FMS- 10A	FMS-10A
193R-220M	FMS- 10A	FMS-10E
193R-220N	FMS- 06Q	FMS-10A
193R-220Q	FMS- 10GR	FMS-10A
193R-220S	FMS- 10GN	FMS-10A
193R-220U	FMS- 10A	FMS-10GN
193R-220V	FMS- 10A1	FMS-10E1
193R-220W	FMS- 10E1	FMS-10A1
193R-220X	FMS- 10E4	FMS-10A1
193R-220Y	FMS- 10E	FMS-10A
193R-220Z	FMS- 10E	FMS-10GA

## 4R-2 (19 x 7)

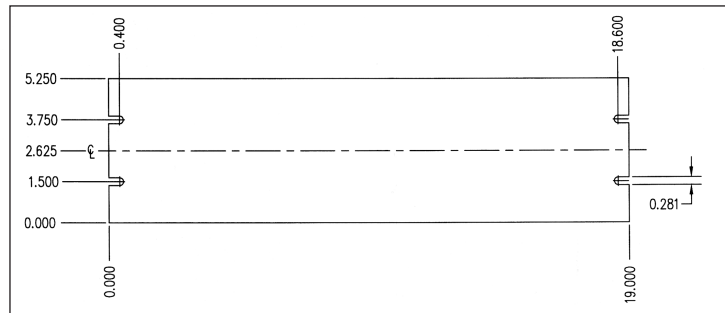
Cat. No.	Pos A	Pos B
194R-220A	FMS- 10E2	FMS-10E2
194R-220B	FMS- 10E2	FMS-10E3
194R-220C	FMS- 10GT	FMS-10GT
194R-220D	FMS- 10A	FMS-10A
194R-220E	FMS- 10E	FMS-10E
194R-220F	FMS- 10A1	FMS-10A1
194R-220G	FMS- 10E1	FMS-10E1
194R-220H	FMS- 10GM	FMS-10GK
194R-220J	FMS- 10GK	FMS-10GK
194R-220K	FMS- 10JJ	FMS-10GK
194R-220L	FMS- 10A	FMS-10E1
194R-220M	FMS- 10E1	FMS-10A1
194R-220N	FMS- 10E4	FMS-10E4
194R-220P	FMS- 10A	FMS-10E4
194R-220Q	FMS- 10E1	FMS-10FR
194R-220R	FMS- 10E3	FMS-10E3
194R-220S	FMS- 10AB	FMS-10E
194R-220T	FMS- 10E	FMS-10QL
194R-220U	FMS- 10F	FMS-10F
194R-220V	FMS- 10E	FMS-10A

19 x 3.5 in.

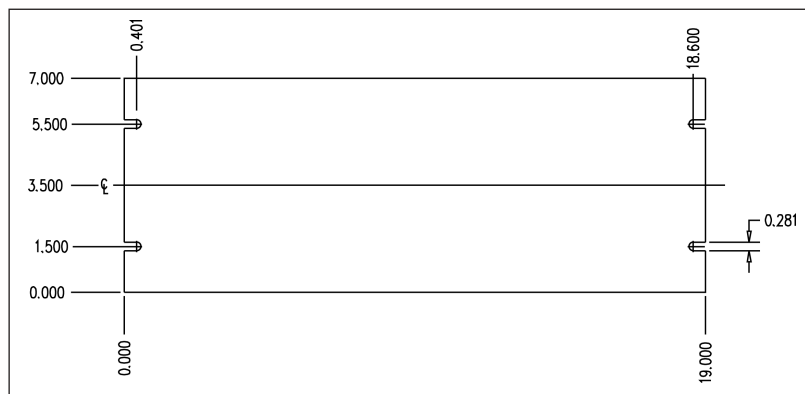
DRAWING #51644



DRAWING #51645  
19 x 5.25 in.



DRAWING #51646  
19 x 7 in.





## ORDERING INFORMATION

The catalog numbers under the arrangements on pages 12-16 will be helpful in determining the switch layout. Always use the front view, left to right, in determining the layout. To order switches with stud terminals: Specify the desired arrangement and add the suffix -ST. **Example:** 192R-220A-ST. A black cover comes standard with FMS switches. To order the optional deeper, wider, clear cover, please substitute a 2 in place of the 1. **Example:** 292R-220A. To order the optional FMS Lockout Kit, please use catalog number FMSLOCK-1. To order the FMS Lockout Kit already installed on the 19 Inch Rack Mount System, please use prefix L2. **Example:** L292R-220A. To order the optional narrow clear cover, please substitute a 3 in place of the the 1. **Example:** 392R-220A.

### FMS 19 inch Rack Mount System - Double (2 FMS Test Switches)

	Plate Size	Prefix Black Cover	Prefix Deeper, Wider, Clear Cover	Prefix Deeper, Wider, Clear Cover Lockout	Prefix Narrow Clear Cover	Pos A	Pos B
2 Rack Unit	3½ x 19	192R-2	292R-2	L292R-2	392R-2	FMS-_____	FMS-_____
3 Rack Unit	5¼ x 19	193R-2	293R-2	L293R-2	393R-2	FMS-_____	FMS-_____
4 Rack Unit	7 x 19	194R-2	294R-2	L294R-2	394R-2	FMS-_____	FMS-_____

### FMS 19 Inch Rack Mount System - Triple (3 FMS Test Switches)

	Plate Size	Prefix Black Cover	Prefix Deeper, Wider, Clear Cover	Prefix Deeper, Wider, Clear Cover Lockout	Prefix Narrow, Clear Cover	Pos A	Pos B	Pos C
2 Rack Unit	3½ x 19	192R-3	292R-3	L292R-3	392R-3	FMS-_____	FMS-_____	FMS-_____
3 Rack Unit	5¼ x 19	193R-3	293R-3	L293R-3	393R-3	FMS-_____	FMS-_____	FMS-_____
4 Rack Unit	7 x 19	194R-3	294R-3	L294R-3	394R-3	FMS-_____	FMS-_____	FMS-_____

All positions are front view (left to right)

### FMS 19 Inch Rack Mount System Clear, Deeper, Wider Cover Retro-fit kits

Double Units.....Cat. No. FMSKIT-10  
Triple Units .....Cat. No. FMSKIT-30

### FMS 19 Inch Rack Mount System Narrow, Clear Cover Retro-fit kits

Double Units.....Cat. No. FMSKIT-10N  
Triple Units.....Cat. No. FMSKIT-30N

### To specify the FMS 19 Inch Rack Mount System

**Example:** To order a customized, double rack system, specify:

No. of poles .....1-10 pole test switches  
Size of Rack .....3½ x 19, 5¼ x 19 or 7 x 19  
Arrangement .....Pos A - FMS-10A  
  Pos B - FMS-10E1  
Terminal Type .....Specify stud or screw terminal  
Cover Type.....Black, Clear  
  (deeper, wider or narrow)  
Blank Space .....BL (No Switch)

Please refer to pages 12-16 to select the catalog number for each position.

**Special Arrangements:** In addition to the typical arrangements shown on pages 3-8, special arrangements are available. These can be made of any combination of potential or current elements, with a maximum of 10 pole positions. Please refer to the **“Special Orders”** section of the FMS Test Switch information, page 10.

After selecting your desired arrangements, please contact our office either by phone (800) 325-4574, fax (214) 331-7368 or Email: [states@megger.com](mailto:states@megger.com) for a complete catalog number.

If you need applications assistance, prices and/or ordering information, please contact our office at the numbers above.

**We can customize, please ask.**

Contact Technical Sales for Ordering Information 1-800-325-4574

# STATES

4271 BRONZE WAY  
DALLAS TX 75237-1019 USA  
Ph: 1 800 325 4574  
Toll Free: 1 214 331 7316  
Fax: 1 214 331 7368  
Email: [states@megger.com](mailto:states@megger.com)  
Web: [www.statesproducts.com](http://www.statesproducts.com)